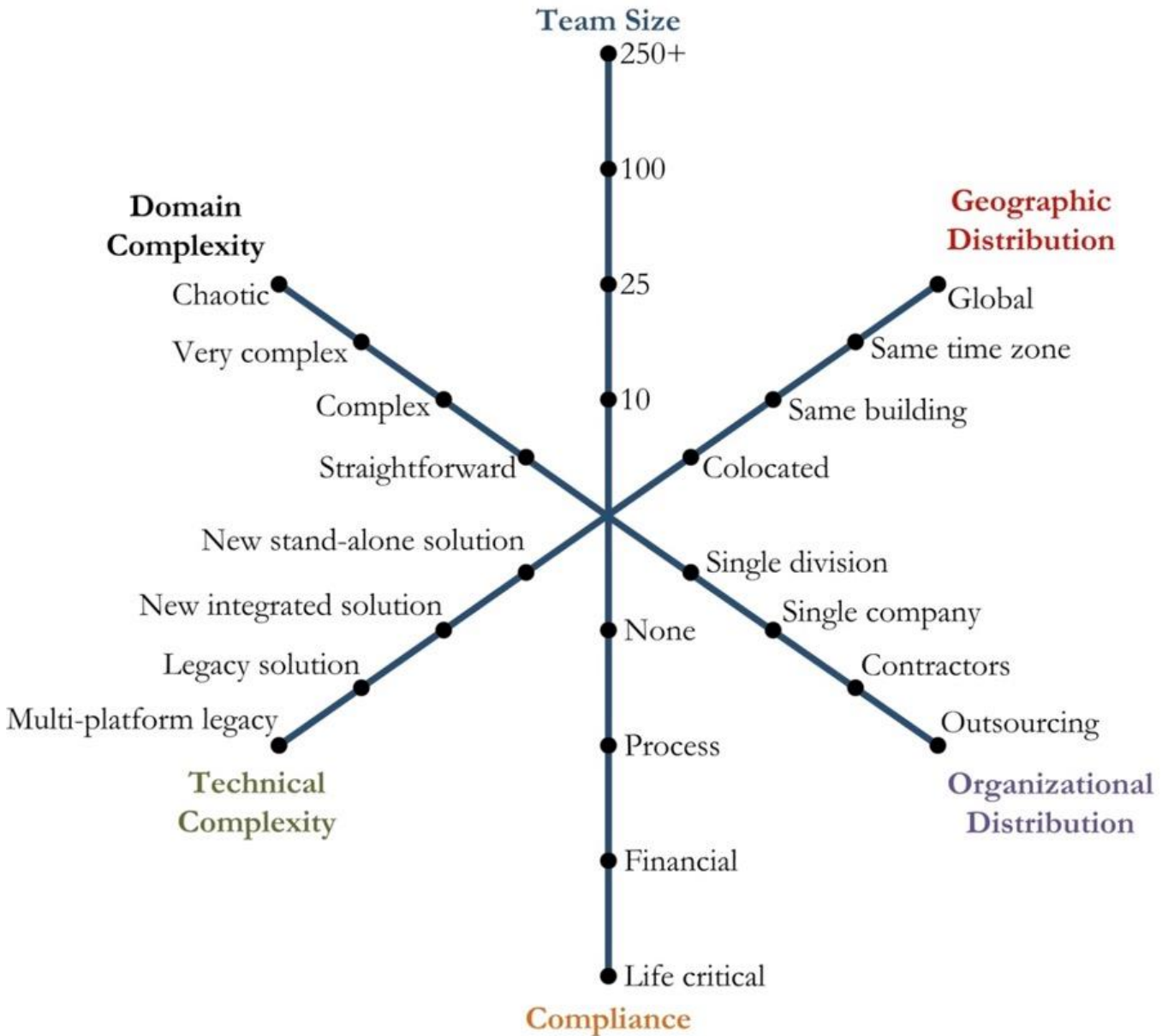


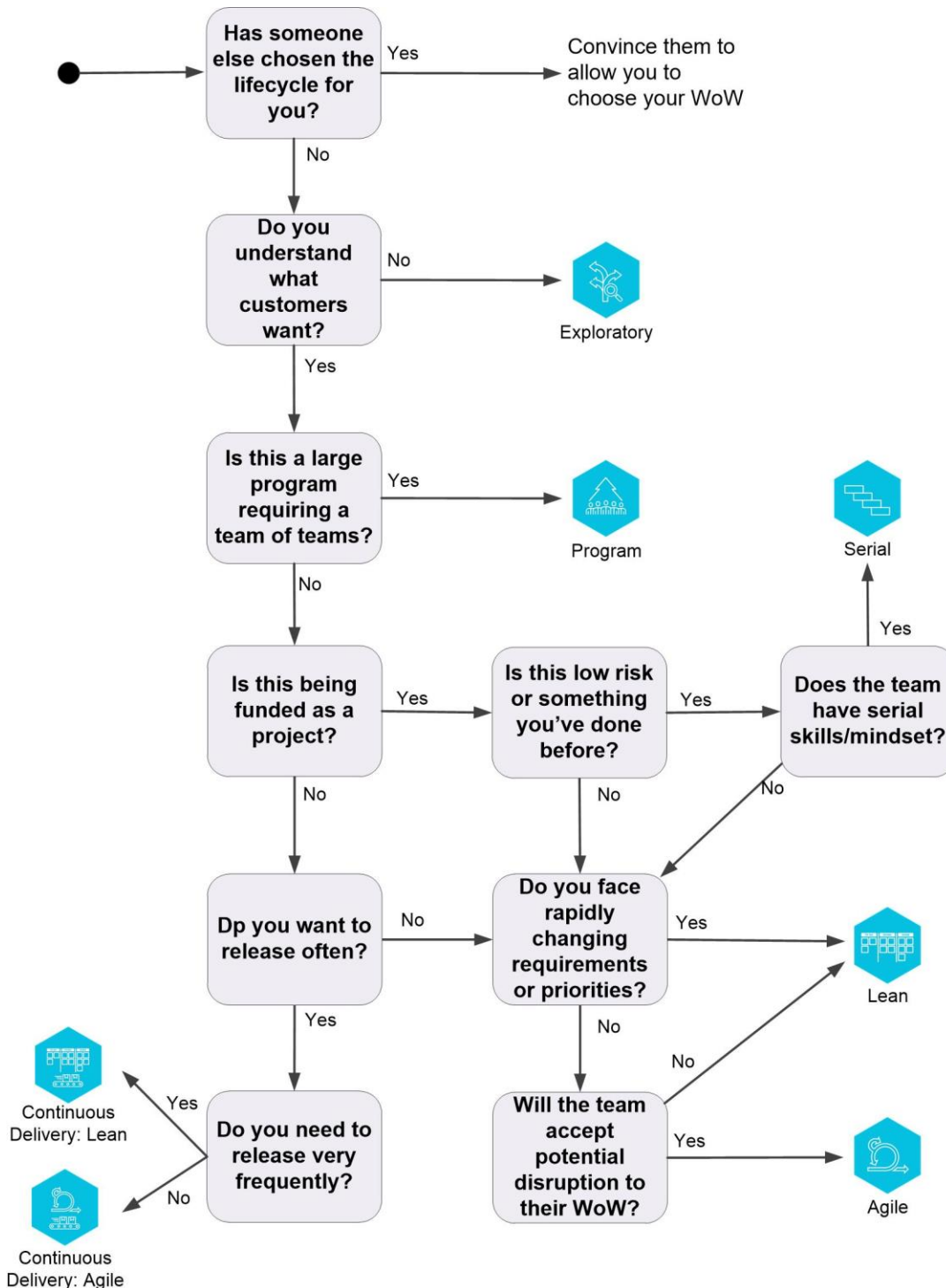
# Step 1: Analyze the context

As you analyze the context using the spider chart, pay special attention to level of risks, complexity, and scaling issues.



# Step 2: Select the best-fit lifecycle

Follow the decision tree to the lifecycle that is the best-fit for the team.



# Step 3: Connect the dots

Using the set of goal diagrams cards (21 in total), rank the goal diagrams in each of the four categories (inception, construction, transition, and ongoing) from most relevant to least relevant given the context.

You will end up with four ranked categories. Circle the goal diagram that is highest ranked in each phase the context.

<p><b>Form Team</b></p> <p><b>Align with Enterprise Direction</b></p> <p><b>Explore Scope</b></p> <p><b>Identify Architecture Strategy</b></p> <p><b>Plan the Release</b></p> <p><b>Develop Test Strategy</b></p> <p><b>Develop Common Vision</b></p> <p><b>Secure Funding</b></p> <p style="text-align: right;"><b>Inception</b> Get the team going in the right direction.</p>	<p><b>Prove Architecture Early</b></p> <p><b>Address Changing Stakeholder Needs</b></p> <p><b>Produce a Potentially Consumable Solution</b></p> <p><b>Improve Quality</b></p> <p><b>Accelerate Value Delivery</b></p> <p style="text-align: right;"><b>Construction</b> Incrementally build a consumable solution.</p>	<p><b>Ensure Production Readiness</b></p> <p><b>Deploy the Solution</b></p> <p style="text-align: right;"><b>Transition</b> Release the solution into production.</p>
<p><b>Grow Team Members</b></p> <p><b>Evolve WoW</b></p>	<p><b>Coordinate Activities</b></p> <p><b>Leverage and Enhance Existing Infrastructure</b></p>	<p><b>Address Risk</b></p> <p><b>Govern Delivery Team</b></p> <p style="text-align: right;"><b>Ongoing</b> Improve and work in an enterprise aware manner.</p>

v4.1 2013-2018 © Disciplined Agile Consortium

# Step 4: Make some choices

For each of the most relevant goal diagrams (one from each of the four categories), identify some key practices that will make the backbone of Team Groceries' way of working.

## Inception

Goal	Decision	Practice(s) selected

## Construction

Goal	Decision	Practice(s) selected

## Transition

Goal	Decision	Practice(s) selected

## Ongoing

Goal	Decision	Practice(s) selected

# Step 5: Guided continuous improvement

Here is the updated context:

Hooray! The first version of the grocery shopping app is live and has been in the hands of customers for six months. Here's what the company notices...

- We are not getting to one of our intended audiences, millennials.
- Maybe we just don't understand their grocery and grocery shopping needs well enough.
- We are not interacting very much with our internal stakeholders. What other options to do we have?
- We would like to move faster and get updates to the website out the door more frequently and more often. How do we do that?

Given the updated context for Team Groceries what is the immediate problem you want solve? Think about how you will measure success. Select potential solutions from relevant goal diagrams.

## Problems and metrics

Problem we are solving	Potential metrics

## Potential solutions

Goal	Decision point	Practice(s) selected